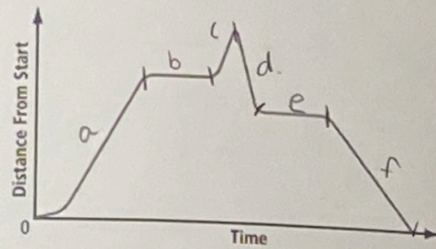


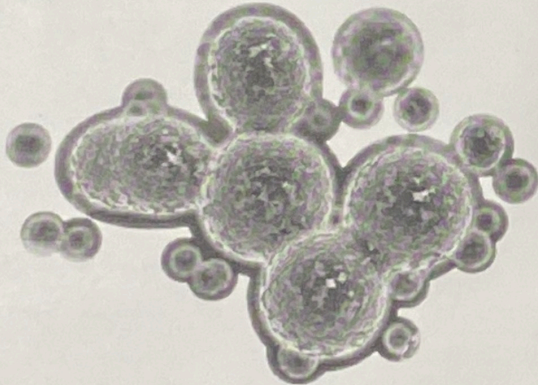
Example 1 Interpret a Graph

Wakeboarding has grown to be a popular water sport. The graph shows the distance that a wakeboarder is from her starting point on Last Mountain Lake in Saskatchewan. Describe what the boarder is doing.



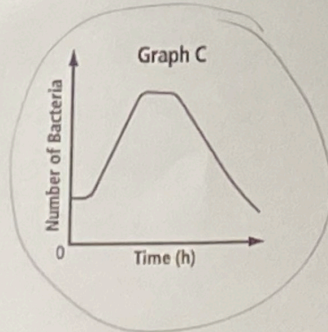
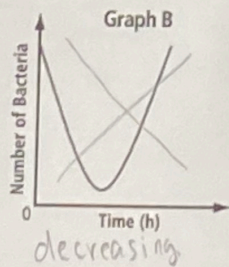
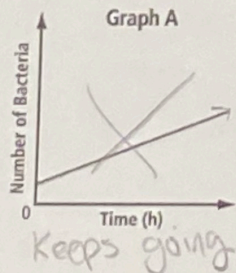
- a) waking boarding away from start point.
- b) Stationary in water.
- c) boarding away from start.
- d) boarding towards start
- e) stationary in water
- f) boarding towards the start.

Example 2 Interpret a Graph



Graph C
Shows initial growth, then decline once food supplies are depleted.

Which graph best represents bacteria growth if the bacteria's food supply is limited? Explain your choice.



Example 3 Graph a Situation

Josaphee leaves her home and walks to the store. After buying a drink, she slowly jogs to her friend's house. Josaphee visits with her friend for a while and then runs directly home. Using the distances shown, draw a distance-time graph that shows Josaphee's distance from her house. Explain each section of your graph.

