

4.1 Enlargements & Reductions

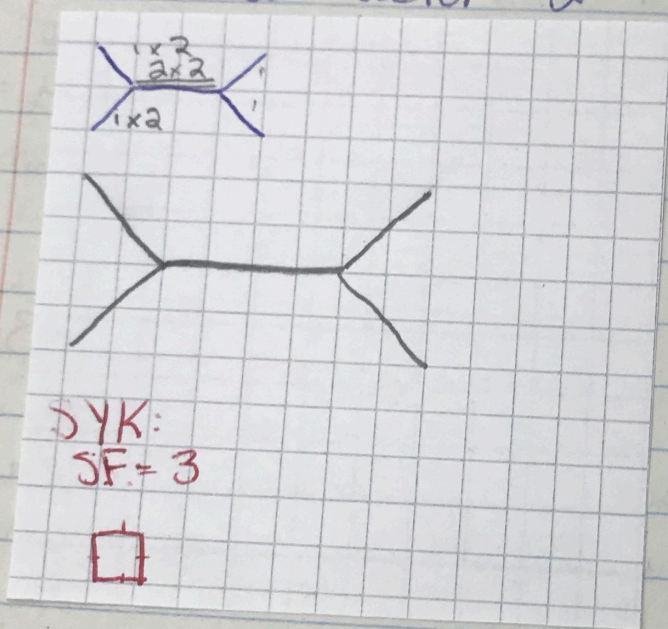
Definitions:

Enlargement: to make bigger

Reduction: to make smaller

Scale factor: the value you multiply the original image by to get the new image

Ex 1: Draw an Enlargement
Scale Factor = 2

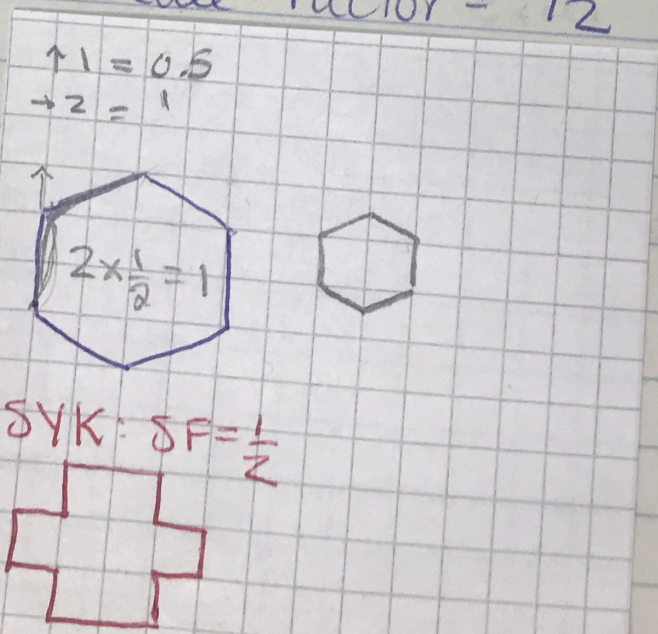


JYI:
if the scale factor is...

Greater than 1
= enlargement

Ex 2: Draw a Reduction
Scale Factor = $\frac{1}{2}$

Smaller than 1
= reduction



Equal to 1
= stay the same

